

GARDENS Four Seasons

GARDENDESIGN

Nov./Dec. 2019

LANDSCAPE DESIGNS

I'm Happy to Share!



“Wishing you all the fun, warmth & love this incredible season has to offer - looking forward to an amazing 2020!”

- Denise Balcaen

As a Landscape Designer I delight in spreading the Joy of Nature. So far in GARDENDESIGN I have focused on topics I thought would be of benefit to homeowners & plant lovers alike. But I was musing to myself one day (I do a lot of that!) & thought, gee, since I plan so many yards in a year - you, my wonderful readers might like to see some of the properties I've had the privilege to work on.

So here are a few **BEFORE & AFTERS** & the reasons I chose to show off these in particular. I hope you enjoy them as much as I had fun composing them!

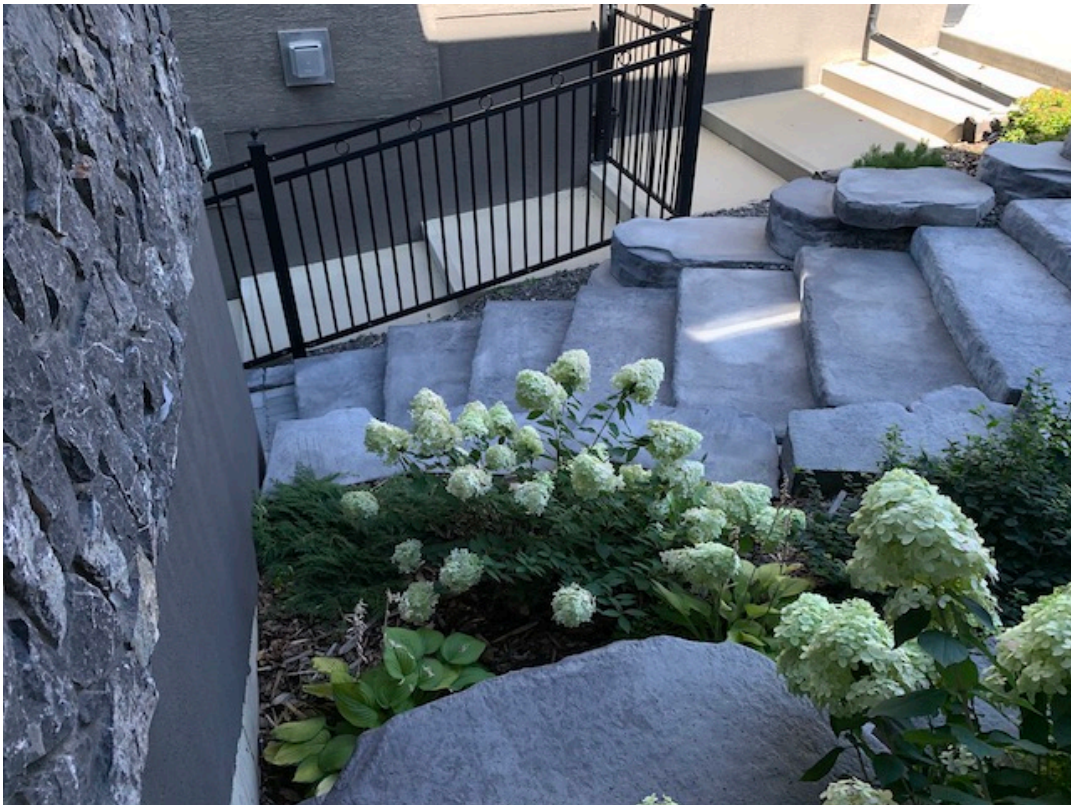
STEP CONUNDRUM



BEFORE - a steep drop from front yard to back along the side yard necessitated a strategically planned set of steps including a retaining wall.

I relish working with grade changes - but this called for extra time & attention!

AFTER - The remedy? Massive manmade boulder-like slabs placed not only as steps but also forming a multi-level retaining wall.



These steps, including their foundation were built to last & will likely survive the house itself!



Here you see the **BEFORE** of the corner that shows the steep slope that had to be developed.

AFTER Below - you can see the terraced effect created by constructing several planting beds. A perfect shady spot for Hydrangeas with low growing Junipers & Gold Creeping Jenny cascading over the edges.

The plants soften the



hardscape enabling this new landscape to enhance the grandeur of the house!

**SEAMLESS FLOW from EXISTING DECK to new
PATIO & verdant BACK YARD**



BEFORE -
looking
from the back of
the yard towards
the deck. How
best to design
easy traffic flow
& a comfortable,
roomy patio while
still having space
for a good patch
of lawn?

AFTER -

Voila!



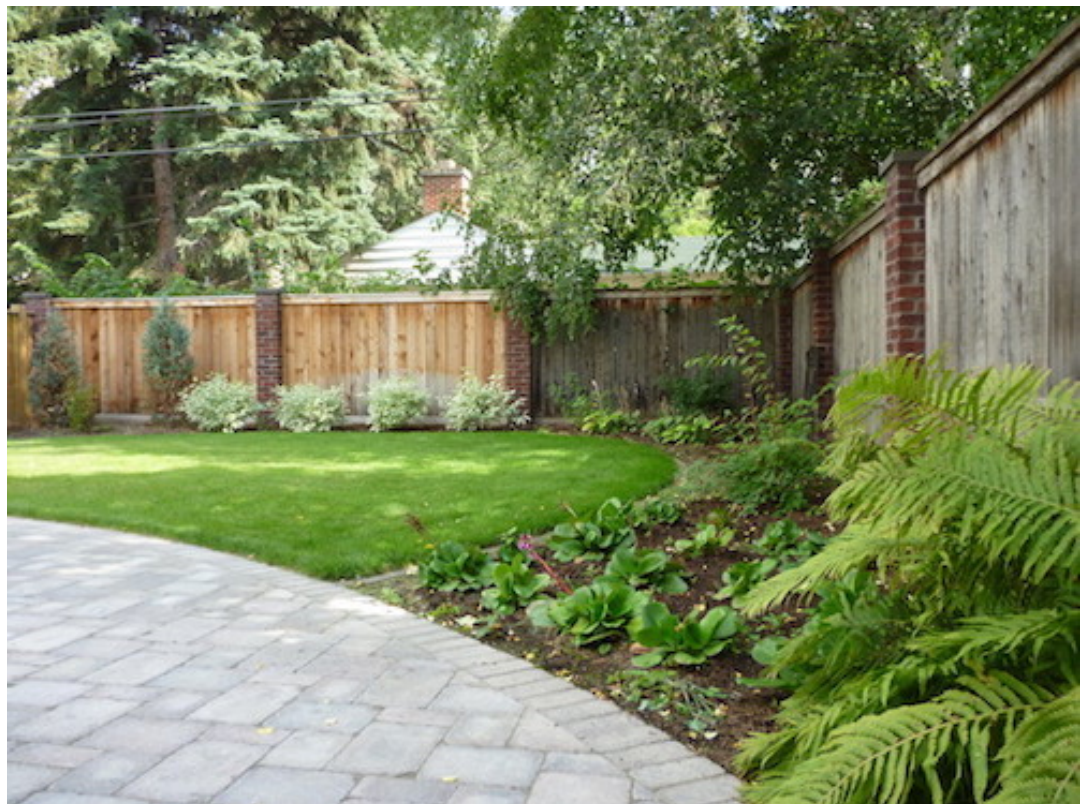
BEFORE - the view from the side of the deck out into the yard.



AFTER - a whimsical shape for the border incorporates the existing fern bed.

Don't you just want to go & lounge on the lawn?

Me too!



DESIGN a PATH to SHED & tie in a PERENNIAL BED BORDER

BEFORE - This massive lot had a number of existing trees that the homeowner had wisely chosen to keep & base the new yard around.



A path was required to access the distant garden shed but yet become a border for a future perennial bed beneath the trees. The path also had to suit the relaxed setting.

AFTER - I enjoy working with existing plant material but particularly so with trees & shrubs - they will often dictate how the yard ends up looking. I find it is kinda like listening to nature & discovering what she wants the final picture to look like.



A few gentle curves along with a generous sidewalk width addressed both wishes plus created a very strong pleasing meandering line for the eye to follow - making the shed seem a bit closer & more inviting. I think it turned out quite delightful if I do say so myself!

STREET APPEAL

& last but not least - a **BEFORE** of a front yard.....



There were 2 identical mature Japanese Tree Lilacs growing off to the side of the new construction creating a perfect 'frame' for the house. Needed was pedestrian access from the front street, pleasing plantings to welcome any visitor & a roomy 'landing' for the front porch.

It is my belief that the landscape should never overpower the house but complement & set it off instead.

AFTER - All requirements were met with the curvy path widening to meet the porch & bordering nicely the newly planted beds beneath the Lilac Trees. Gosh I LOVE what I do! It is so gratifying to take a space & a list of customer wants & come up with a beautiful yet functional design!



PLANT OF THE MOMENT

Selaginella Kaussiana variegatus 'Frosty Fern'

You've likely seen this little charmer sitting pretty by itself in a pot or complementing other 'festive' tropical plants in a floral arrangement. So I thought I'd take a closer look because it is so adorable!



It looks like a fern but is actually a form of Spike or Club Moss. So, fern or moss, it stands to reason it demands consistent moisture & high humidity. Indoors it will do well with indirect light (just think of it's natural habitat - a cool, moist, humid woodland floor & you'll get what it wants! ;)

Tiny aerial roots are produced when the humidity is just right. Those same wee roots will shrivel when moisture is lacking. In short - it is, as it looks - a bit of a diva requiring extra attention - ok, ok! it is high maintenance! But if you have only one I think it is worth the additional care.



I'd love to see what it would do in a shady spot in my garden as an annual so I hope I can find a few come Spring. Meantime - I'd be keen to hear of any experiences you might have had with Selaginella!

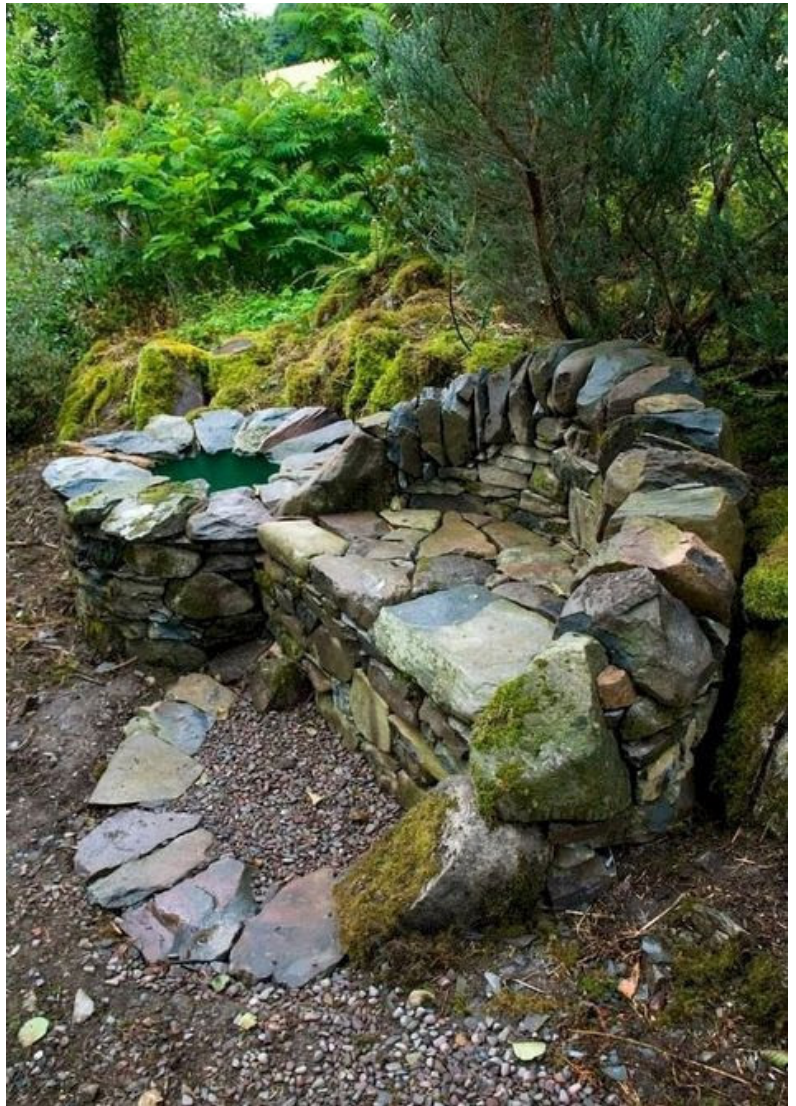


DESIGN BRILLIANCE

Anyone who knows me knows that I have a great appreciation of rocks & boulders! I am always searching out new & innovative ways to use them. So when I saw this carefully composed bench tucked into a shady nook - well let me tell you - if I had ANY skills whatsoever resembling that of a Rock Mason - I would have this first on my Spring to-do list.

Every piece is placed deftly so the one next to it has to be fit with the same precision. I simply adore this type of detail in a Landscape.

Talk about a work of art!



**COMING in 2020 - watch for some EXCITING
CHANGES in
GARDENDESIGN**

Whiling away some wintry days? Click on the link below
& follow me on **INSTAGRAM**
https://www.instagram.com/gardens_4_seasons_land_design/



or perhaps **LIKE** me on **FACEBOOK**

<https://www.facebook.com/Gardens-Four-Seasons-1043590872373132/>

or then again - if you really have some time to dream about your own bit of paradise for next season - check out my **PINTEREST** pages. Lotsa ideas, inspiration & just plain entertainment!

<https://www.pinterest.ca/gardens4seasons/grade-changes/>

GARDENDESIGN BACK ISSUES are also available for the asking! - how about **Visualizing Next Year's GARDEN, Winter Texture &/or Ideas to Refresh your Landscape ?**

Feel free to forward this to any friends!

(or they can email me to request their own copy!)

DID YOU KNOW?

- I never, Ever, EVER share my email list - NEVER! :)

* to UNSUBSCRIBE from GARDENDESIGN please reply to this email with NO THANKS!
