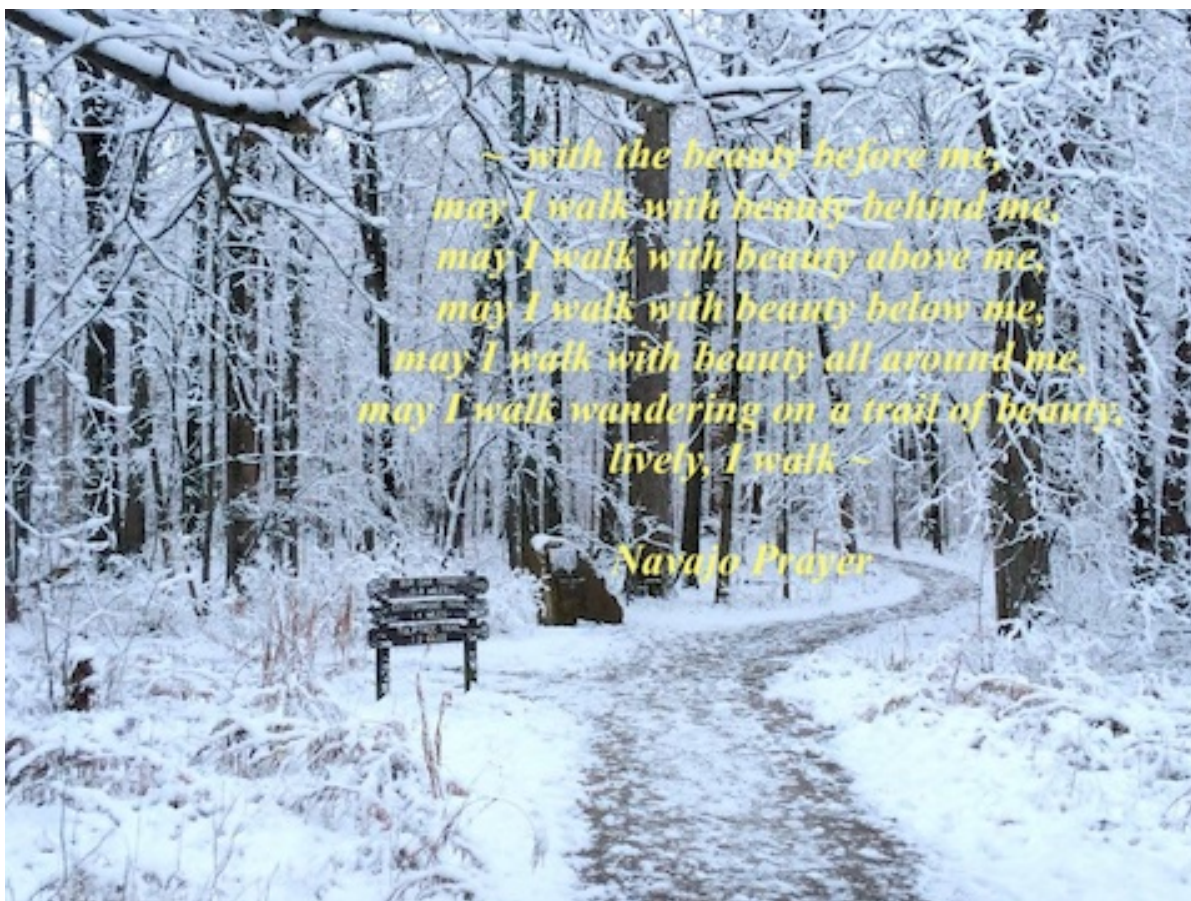


GARDENS Four Seasons

GARDENDESIGN
- Jan/Feb/March 2023 -

MOVEMENT thru' your LANDSCAPE



I cannot express my feelings about passageways more eloquently than this Navajo Prayer ! - Denise



NOTE:

I messed up my Contact List so if you have received this email & never subscribed to it - please reply with UNSUBSCRIBE. Plus if someone you know used to receive it & isn't, please let me know! My apologies & Thank you, thank you, thank you! Otherwise Enjoy!

Also, *merci* to Karen for enjoying GARDENDESIGN so much she wondered if it will continue. Yes! So watch for regular quarterly issues!

Movement Thru' your Landscape



Every feature in a yard is an opportunity to come up with something special & *paths* are one of those creative moments.

Deciding how you want to *move thru' your piece of land* as well as *where to enter & exit* is one of THE primary aspects I look at when

'Traffic Flow' is not only functional but can produce interesting shapes in turn making spaces to plant your paradise!

Even the most basic trail automatically ties so many aspects of your landscape together - movement from one space to another, places for planting & even carving out open lawn surfaces.

In nature - walkways are critical. Many animals have their preferred routes thru' the wilderness & even tho' they twist & turn they are always ***the path of least resistance & yet the most direct route.*** Mankind, like critters, find their way from one spot to another, much the same way.

So let's take a look at the most common kind on a property - from the front street to the front door.



One of my favourite front walkway treatments is to ***carve a bed out of the surfacing*** which in turn widens it but still proffers a relatively direct track with far more delight! Simple yet beautiful, all the while creating the ***illusion of movement*** with a few twists & turns.

Oh, but then, what about a segue to the side yard or off towards the garage? A fork in the road not only adds interest but can ***generate mystery*** - what is behind the corner of the



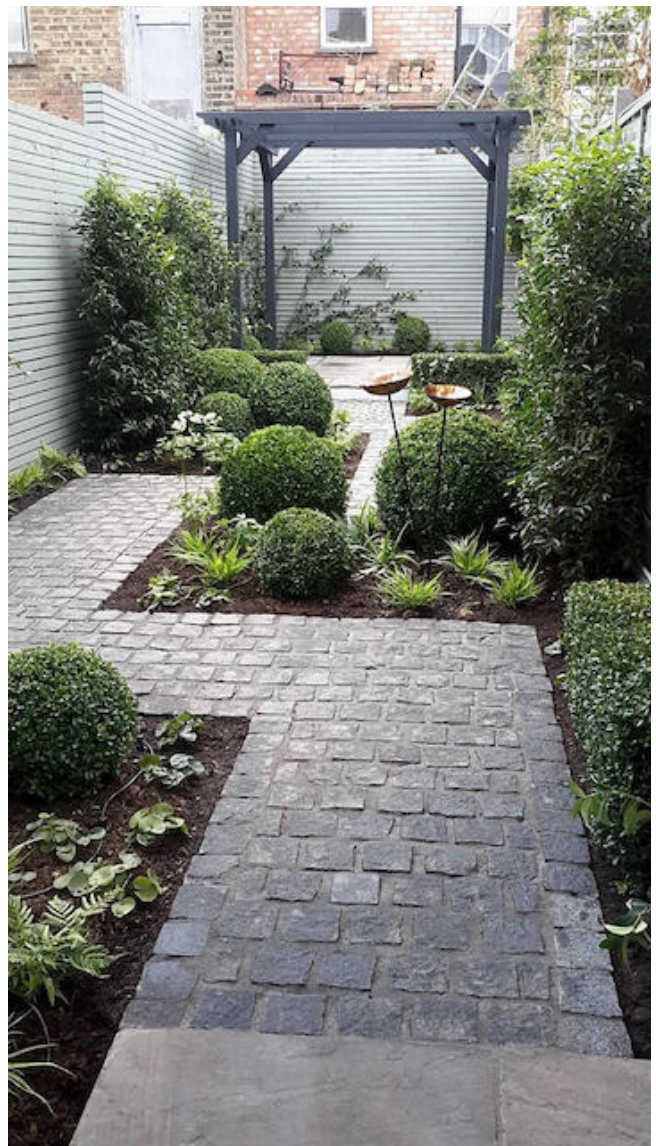
house where the sidewalk leads? They don't always need a destination - they ***can appear to lead somewhere but actually don't!***

Trails guide us from one space to another both visually & physically. They become events created by what you encounter along the way. Remember the adage

‘The Journey is more important than the Destination’?

Your walkways can & should be happenings all by themselves! Forest trails for instance, can invite meandering in wilder settings. I encourage anyone who has such a wild setting to capitalize on the environment - magical!

A path, simply by existing, affords the viewer a sense of movement & invitation - come & tread upon me - it seems to say. One ***beautiful view*** can lead to another space with an equally gorgeous view but a completely different environment! Say a sunny locale transitioning to a shady nook. That in turn could open up to another incredible vista! & ***don’t forget to look back;*** another chance to enjoy the ***view from a different perspective entirely.***



It's a real opportunity to have a grade change on your property - it adds depth & interest right away. Going up a rise or over a knoll, whether it be in steps or the same material as the path, a change in elevation instantly creates visual depth!



& Bridges!
Well, even if
you have no
stream in your
garden, *a track
leading across
a small quaint
bridge* is
charming!



As you know, routes don't always have to be direct. Take a look at the way *potagers* (pictured below) were fashioned hundreds of years ago as attractive & practical vegetable gardens. This design can easily translate to any style of grounds, formal or informal - veggies or not!



Main sidewalks that will be shovelled in winter should always be a durable, flat, hard surface but aside from that criteria, they can be made of anything - crusher dust, stepping stones, pallet strips - you name it!



Multi-purpose walkways make the best use of space, especially with smaller grounds. Your trail may lead to the shed but also out into the veggie patch or utility spot which gives it more than one use. Even making your patio a bit larger to allow for someone to easily walk thru' spots where you have seating or maybe widen along the edge to let someone tread on the border, is a trick that works amazingly well. It can also save creating a separate path. Make your paths multi-purpose as much as possible.



Perhaps the route to take out the trash can take you under a moon gate arbour that in turn cleverly blocks the trash zone. I absolutely adore circular gate arbours (aka - moon gates) but go crazy over one with just a touch of greenery maybe 2/3 of the way up one side & 1/3 of the way up on the other - exquisite!!

& never forget - grass alone, or stepping stones laid into lawn can make an amazing, low maintenance passageway!



Older lots
likely have
existing
walkways.
*Don't feel
confined to
keeping a
layout already*

there - often these thoroughfares are narrow, straight & not level. Remove what is there & start fresh in that location or another.



*- this reminds me of the
original surfacing my
house came with!*

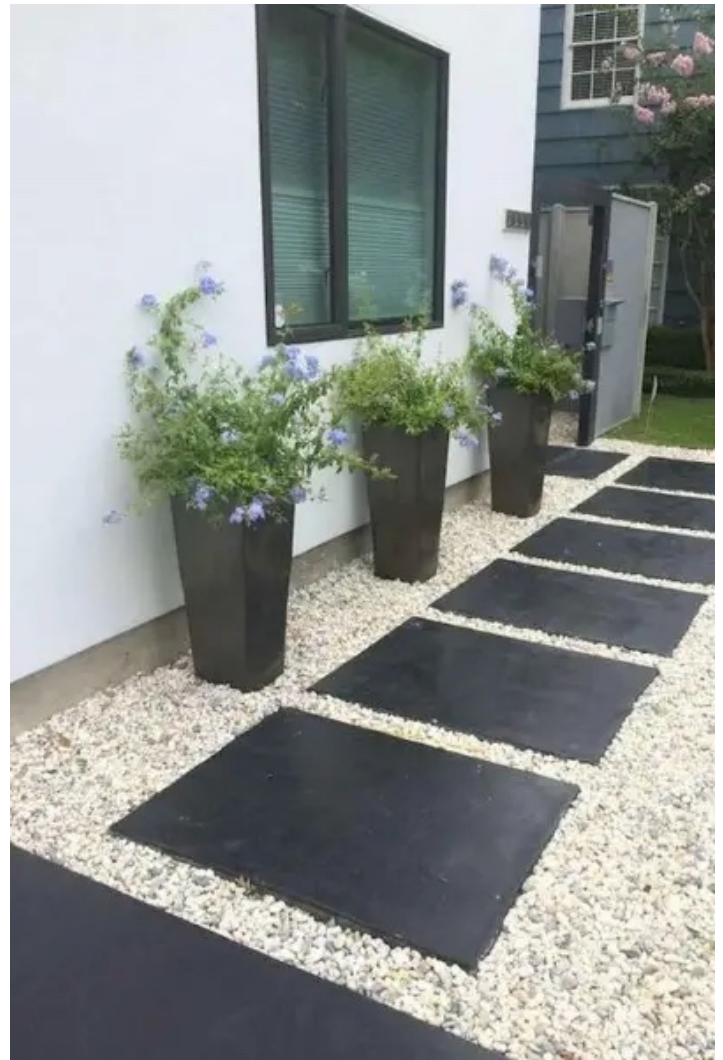


If a sidewalk is in good shape & properly sloped, maybe you can *widen it by using a different or complementary material to border it.*

Brilliant!

Starting fresh with a *New Yard?* I'd suggest living in it for awhile & see *where the natural walkways occur.*

Next, plan side routes off your main access to allow a way in to, say, a greenhouse or a 'secret' garden.



- a magical front entrance - if this New Front Yard doesn't say 'welcome' - well, I don't know what does!



Once your traffic pattern is set, you will find it easier to plan the spots you use for different outdoor activities - lawn play area , patios & decks, access to pools, hot tubs, sheds or distant seating spots. As an example, promenades can give you the chance to place a garden bench for a spot to rest or an exciting garden vignette or statue to ponder.



One final tip on passageways - keeping them simple is always a good decision . If you get too much going on such as too many different surfaces & courses heading off every which way, it becomes bewildering to follow visually & physically.



SO you can see how trails in your yard not only are useful but offer opportunities to plan pleasing ‘happenstances’ thru’ out. If you look at a walkway as a design detail you will get as excited as I do about their possibilities.

Have FUN with Movement thru’ your Landscape!



....well here is a **NIFTY GARDEN TIP!**

Can't wait for Spring?

Do what I like to do - bring it closer by snipping a few branches from trees or shrubs & place them in a vase. They will soon start to unfold their leaf buds giving you a feel of being much closer to warmer weather. Try a Poplar branch for early pussy willows or a clipping from a Cherry tree for a few early blossoms. If you can, get your hands on some Forsythia twigs, they will produce bright yellow flowers within a matter of days. Breathe in the Freshness - you're Welcome!



DESIGNS

I am pleased to show off!

I really must start getting more AFTER pics of yards I design - the contrast between BEFORE & AFTER speaks much louder about the final result.



But I'll just have to be happy with showing you a back yard pathway I planned over 25 years ago as it ties neatly in with this edition's theme. My clients really did justice to the Design we came up with by using crusher dust for the path & edging it nicely with manmade bricks. An adorable little rose garden just off a small, curved patch of lawn bordering a circular patio. Simple yet exquisite in its simplicity. :)

PLANT OF THE MOMENT

Hen & Chicks (Semperviven)

Fitting right in with our topic of pathways (& green roofs as you'll see further down) are the common, yet versatile & beautiful, low growing Hen & Chicks.

Yes! We can grow perennial succulents here & tho' don't have quite the wide variety as tropicals - we have a pretty darn good selection to choose from.



- *Cobweb Hen & Chicks are just simply intriguing!*



They're often found on thatched roofs in the Europe which gives them another common name - House Leeks.

Full, full sun & hot, dry spots will allow them to thrive. They need very little soil & do well in rockeries & even on decaying wood. Planted en masse near sidewalks or amongst stepping stones, they'll tolerate light foot traffic plus they look stunning!



They have tiny hair-like roots, so when planting, break up the soil surface slightly & press the plant into the dirt. Baby ones only need to be set on top of the soil - they automatically send out roots & establish quite nicely.



Fun Fact - when a surprisingly shaped flower shoots up, that particular ‘Hen’ perishes but any nearby quickly fill in the blank space .

Aren’t plants just SO—o-o-o-o-o fun?!



DESIGN BRILLIANCE

You may not want an entire **Green Roof** on your home to start but how great would it be to have garden shed with one?

Now THERE is a touch of Design Brilliance that will make your verdant patches really stand out!



- funky little bin cover along with a shed/firewood storage combo - both with a special touch of a living roof!



An aerial photograph of a city featuring a river with several bridges. The foreground is dominated by lush green trees. A stylized white tree logo is positioned to the right of the 'SOS TREES PRESENTS' text.

SOS TREES PRESENTS

Arbor Week 2023

HEALTHY TREES HEALTHY PEOPLE

MAY 20 - 28

Trees enhance mental,
social and physical health.

They are also a source of nutritious food
and help mitigate climate to cool our city ensuring
we have a healthy sustainable environment.

**Have fun, get inspired and learn
more about our amazing trees!**

For information on Arbor Week and
a list of free public events visit

sostrees.ca

Three circular inset images arranged in a cluster. The top circle shows a child in a yellow shirt reaching for fruit on a tree. The middle circle shows a group of people standing under a large tree. The bottom circle shows people sitting on a picnic blanket on a lawn under a tree.

**Join SOS Trees Saskatoon to celebrate
ARBOUR WEEK - May 20 to 28, 2023!**

Join in marvelling at our amazing living, breathing, **HEALTHY TREES** & learn how they give so much back to us humans!

There will be **MANY** activities thru' the week. Most are free - some of which include:

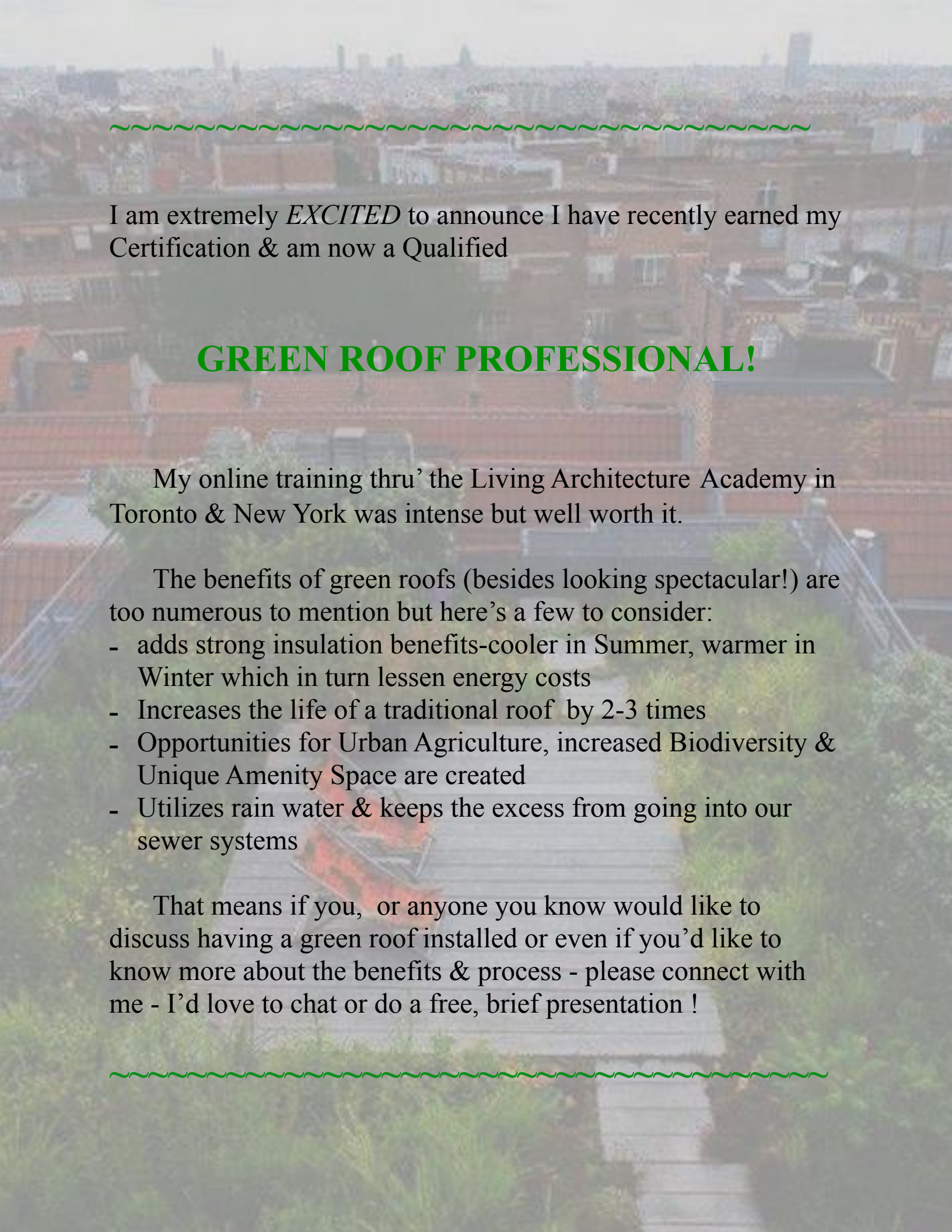
- Speakers
- Guided Tours
- Art Painting Sessions
- Yoga
- Pruning Workshops
- Film Presentation at the Remai
- & of course Tree Plantings!

PLUS - there'll be a kickoff to an annual contest to nominate your favourite Saskatoon Tree! Whew!

Many great prizes including a Landscape Concept Plan from myself. SO c'mon - Root for ***your*** favourite Groot!

<https://www.sostrees.ca/arborweek.html>



An aerial photograph of a city, likely Toronto, showing a dense urban landscape with many buildings. In the foreground, a green roof is visible, featuring various plants and a small structure. The text is overlaid on this image.

~~~~~

I am extremely *EXCITED* to announce I have recently earned my Certification & am now a Qualified

## **GREEN ROOF PROFESSIONAL!**

My online training thru' the Living Architecture Academy in Toronto & New York was intense but well worth it.

The benefits of green roofs (besides looking spectacular!) are too numerous to mention but here's a few to consider:

- adds strong insulation benefits-cooler in Summer, warmer in Winter which in turn lessen energy costs
- Increases the life of a traditional roof by 2-3 times
- Opportunities for Urban Agriculture, increased Biodiversity & Unique Amenity Space are created
- Utilizes rain water & keeps the excess from going into our sewer systems

That means if you, or anyone you know would like to discuss having a green roof installed or even if you'd like to know more about the benefits & process - please connect with me - I'd love to chat or do a free, brief presentation !

~~~~~

GARDENDESIGN

Apr/May/June 2023

Enticing ENTRANCE Ideas for Acreages, Cabins or Farmyard

- is what we will delve into next time!

A common request from large property owners is how to create a welcoming approach to their land & as we all know, first impressions are paramount !



Until then - request any of my many back issues of GARDENDESIGN just by shooting me an email with any or all of these topics!

- Surfacing
 - Make your Yard say WELCOME
 - Front Courtyards
 - Grade Changes
 - Simple Ideas to Enhance any Front Yard

DID YOU KNOW?

I never, Ever, EVER share my email list? & NEVER any ads or pop-ups!

to UNSUBSCRIBE from GARDENDESIGN please reply to this email with NO THANKS!
